



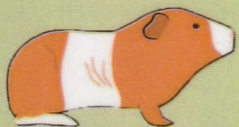
GUINEA PIG BODY SCORING CONDITION CHART

SCORING:

CHARACTERISTICS:

VERY
UNDER
WEIGHT

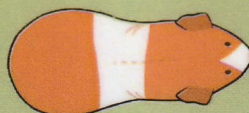
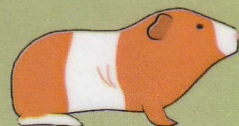
1



- HIPS, SPINE AND RIBS ARE VISIBLE AND EASILY FELT
- TUMMY IS CONCAVE (ARCHED)
- CHEST AND RUMP ARE ROUGHLY SAME WIDTH; NARROWER AT RIBS (AERIAL VIEW)

UNDER
WEIGHT

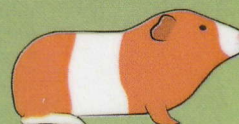
2



- HIPS, SPINE AND RIBS ARE NOT VISIBLE BUT CAN BE EASILY FELT WHEN PETTING
- TUMMY IS SLIGHTLY CONCAVE (GENTLE ARCH)
- CHEST IS MUCH NARROWER THAN RUMP (AERIAL VIEW)

IDEAL

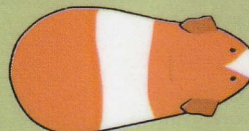
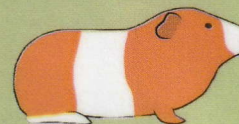
3



- HIPS, SPINE AND RIBS ARE NOT VISIBLE BUT CAN BE EASILY FELT WHEN PETTING
- TUMMY IS NEUTRAL (FLAT, NO ARCH)
- FEET ARE VISIBLE
- CHEST IS NARROWER THAN RUMP (AERIAL VIEW)

OVER
WEIGHT

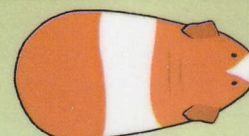
4



- HIPS, SPINE AND RIBS ARE NOT VISIBLE AND DIFFICULT TO FEEL WHEN PETTING
- TUMMY IS CONVEX (SAGGING)
- FEET ARE BARELY VISIBLE
- CHEST IS SLIGHTLY NARROWER THAN RUMP; NOT MUCH INDENTATION AT RIB AREA (AERIAL VIEW)

VERY
OVER
WEIGHT

5



- HIPS, SPINE AND RIBS ARE NOT VISIBLE AND PRESSURE MUST BE APPLIED TO FEEL WHEN PETTING
- TUMMY IS CONVEX (SAGGING ON FLOOR)
- FEET BARELY VISIBLE OR NOT VISIBLE
- CHEST IS THE SAME WIDTH AS RUMP; NOT MUCH INDENTATION AT RIB AREA (AERIAL VIEW)



RAT BODY SCORING CONDITION CHART

SCORING:

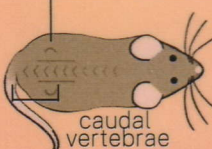
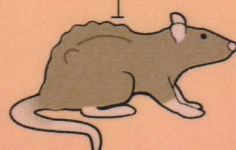
segmented
vertebrae (spine)

hips

CHARACTERISTICS:

VERY
UNDER
WEIGHT

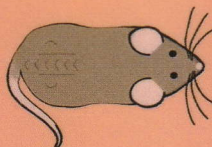
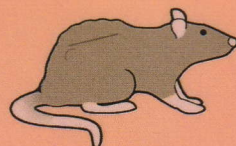
1



- INDIVIDUAL BONES OF THE SPINE PROMINENT AND MAY BE VISIBLE
- LITTLE OR NO FLESH COVER OVER THE PELVIS & TAIL BASE
- BONES ABOVE TAIL (CAUDAL VERTEBRAE) AND HIPS EASILY FELT WHEN PETTING

UNDER
WEIGHT

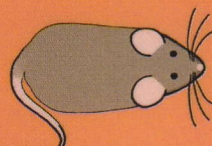
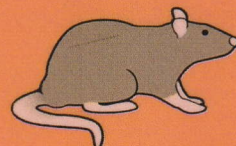
2



- INDIVIDUAL BONES OF THE SPINE PROMINENT
- THIN FLESH COVER AND SMALL AMOUNT OF FAT OVER THE PELVIS & TAIL BASE
- BONES ABOVE TAIL AND HIPS EASILY FELT WITH SLIGHT PRESSURE

IDEAL

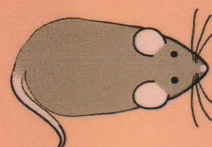
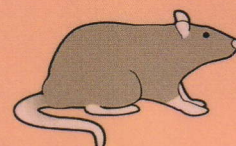
3



- INDIVIDUAL BONES OF THE SPINE NOT PROMINENT BUT CAN BE FELT WHEN PETTING
- MODERATE FAT OVER THE PELVIS AND TAIL BASE
- BONES ABOVE TAIL AND HIPS CAN BE FELT WITH SLIGHT PRESSURE

OVER
WEIGHT

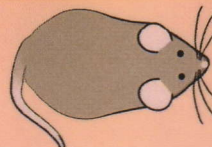
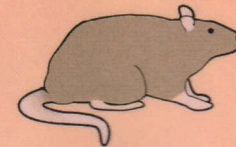
4



- INDIVIDUAL BONES OF THE SPINE CAN ONLY BE FELT WITH FIRM PETTING
- THICK FAT STORE OVER TAIL BASE AND PELVIS
- BONES ABOVE THE TAIL CAN'T BE FELT, HIPS CAN BE FELT WITH FIRM PRESSURE

VERY
OVER
WEIGHT

5



- BONES OF THE SPINE NO LONGER FEEL SEPARATE, CAN ONLY FEEL SPINE WITH FIRM PRESSURE
- VERY THICK FAT STORE OVER TAIL BASE AND PELVIS
- CAN NOT FEEL BONES OVER TAIL AND HIPS